

# ADVANCE™ Termite Bait System

# Installation and Service Guide

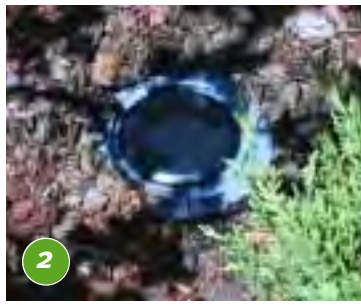
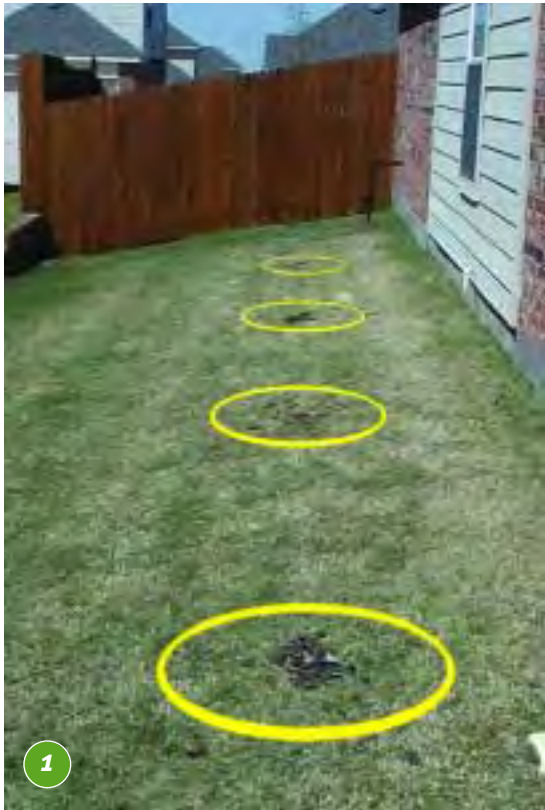


WHITMIRE MICRO-GEN  
**Prescription Treatment**

Making pest management more profitable.

800.777.8570 [www.wmg.com](http://www.wmg.com)





## INSTALLATION

Typically, Advance Termite Bait Stations (TBS) are installed around a structure at intervals of 10 to 20 feet. For best practices, consider installing stations 10 feet apart (Figure 1). Stations are typically first laid on top of the ground in the general location of where they are to be installed. Additional stations can be placed in areas of current termite activity or in areas where conducive conditions exist (i.e., wood-to-soil contact). Once installed, stations readily blend in with the general landscaping, especially in mulch beds (Figure 2).

To create the required opening within the soil several options are available. When one or two stations are installed, a 2 3/4 inch diameter hand auger can be used to efficiently create the necessary openings. If several stations are installed, an electric or gas-powered auger using a 2 1/2 inch diameter auger bit is recommended (Figure 3). When using any mechanically powered soil auger the operator should repeatedly pull the auger out of the ground while excavating the soil cavity. This will prevent the auger from becoming lodged in the soil. When using a manual soil auger, you can create the opening without pulling the auger out of the ground until after the desired depth is reached. In heavy textured soils or soils that drain poorly (i.e., clay, silt-loam) it is recommended that the depth of the cavity extend 2 to 4 inches below the station housing to allow excess moisture to drain.

In general, when using a mechanical soil auger to create a cavity a ridge will form at the soil surface. This soil should be moved from the opening and spread around the lawn or landscaping area (Figure 4).

Stations are inserted into the cavity within the ground and pushed down until the collar of the station rests on the soil surface (Figure 5). If the station is installed in areas with thick or heavy grass cover, a sod cup cutter can be used to clear away the grass to allow the station to be flush with the soil. (Press the station straight down without rotating when inserting into the ground.) If the sides of the station resist going into the soil, it may be necessary to enlarge the opening until the station slides into the cavity with only slight force. Small fins run the length of the station to prevent it from rotating in the soil. Additional anti-rotation fins along the bottom of the station collar are pressed down into the soil to keep the station from rotating and becoming loose. The top anti-rotation fins should cut easily into most soil types. However, additional force may be required in heavy textured (clay) soils when they are dry or heavily compacted. If the station collar does not rest on the soil surface it may be necessary to step on the station to finish inserting it into the soil. With a foot positioned completely across the station cap, step on the station and press down (Figure 6). Advance Termite Bait Stations (TBS) are constructed of durable high impact plastic that can withstand several pounds of direct force.

# Advance™ Termite Bait System



**Advance  
Quik-Lock™ Cap**



**Advance  
Termite Inspection  
Cartridge (TIC) with  
Puri-Cell™ Monitoring  
tablets (contains no a.i.)**



**Advance  
Termite Monitoring  
Base (TMB)**



**Advance  
Termite Bait  
Station (TBS)**



**Advance Termite Bait  
Cartridge (TBC) with  
Puri-Cell Bait Tablets  
contains active  
ingredient**

## GENERAL INFORMATION

The Advance Termite Bait System consists of several new and unique components that work together to create a localized point of termite colonization and control. The foundation of the system is a next generation Advance Termite Bait Station (TBS) that consists of in-ground housing secured with a Quik-Lock cap.

Inside the station are the newly designed Advance Termite Monitoring Base (TMB) and the Advance Termite Inspection Cartridge (TIC) with Puri-Cell monitoring tablets.

The TMB is milled from selected tree species favored by termites. Once installed within the bait station, the TMB creates significant wood-to-soil contact, a very conducive condition for termites. As termites move into and feed on the TMB, they readily forage upward into the TIC and locate the Puri-Cell monitoring tablets.

The Puri-Cell monitoring tablets are formulated by compressing a highly purified cellulose food source that is preferred by termites. This compels the termites to aggressively colonize the station and exploit the Puri-Cell food source.

Once termites are detected in the TMB and/or the TIC, the TIC is removed and an Advance Termite Bait Cartridge (TBC) is installed. This begins the termite baiting process and the start of termite colony elimination.

## GLOSSARY OF TERMS

**TBS** Termite Bait Station.\* Comes fully assembled with the TIC and TMB inside.

**TMB** Termite Monitoring Base. Wood monitor with horizontal grooves that is placed in the bottom of the station. Cut from premium wood species.

**TIC** Termite Inspection Cartridge. This sits above the wooden TMB in the station and contains Puri-Cell monitoring tablets.

**TBC** Termite Bait Cartridge. Contains 93 grams of Puri-Cell bait tablets containing 0.25% of the active ingredient diflubenzuron. Replaces TIC when termites are detected.

**The Spider™** The short and long handle station access tool.

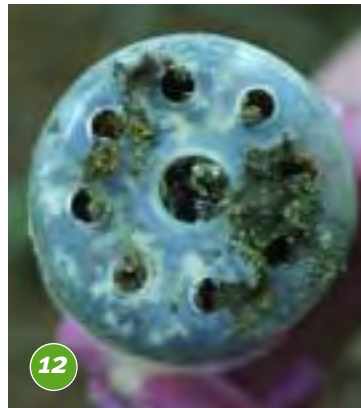
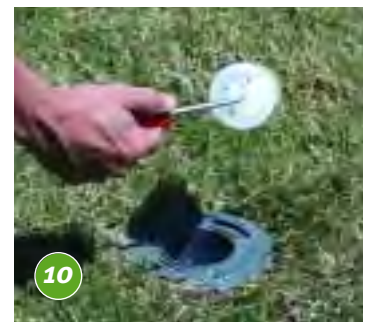
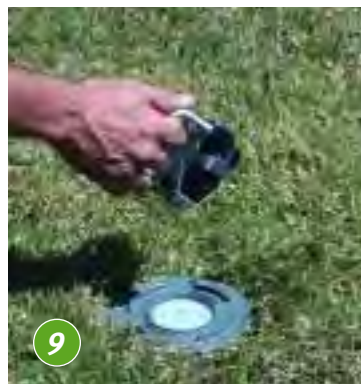
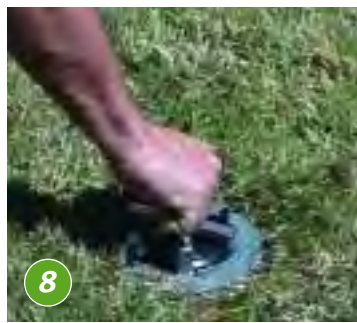
**Compressed** The formulation in which the Advance TIC and TBC are in the cartridge. It is a matrix preferred by termites. Patent pending.

**Quik-Lock Cap** The easy opening station cap. Designed to be technician-friendly.

**Puri-Cell** The preferred cellulose matrix technology designed by Whitmire Micro-Gen scientists that is found in both the TIC and TBC.

\*US Patent #D471,950





## SERVICE

The station is designed for easy installation and service. Although built to resist tampering, the Quik-Lock cap can be easily removed with The Spider station access tool designed specifically for this station.

To open the station, place The Spider on top of the station cover and push down until it is firmly seated, turn counter-clockwise until the Quik-Lock tabs clear the locking ring. The station cap will be held by The Spider until it is returned to the station and locked into place (Figure 9). The Spider was designed to hold the station cap during the inspection process to make reading of the bar code easy and to prevent it from becoming lost in areas of loose soil or mulch. To provide flexibility to the technician, The Spider hand tool comes in a short and long handle style designed specifically for this station (Figure 7 & 8). The long version Spider is also well suited to help locate hidden stations in mulch beds.

To remove the Termite Inspection Cartridge (TIC) use a coter pin hand tool or needle nose pliers inserted into one of the outer holes (Figure 10). Termite feeding activity within the TIC can be readily detected by finding termites in the cartridge, by evidence of their feeding on the tablets, or by the presence of mud (soil) in or around the cartridge itself (Figure 11 & 12).

If termites are not yet active in the TIC, the technician should peer into the center cavity of the TMB for initial evidence of termite activity. Termites will initially find and aggregate in the lower TMB then readily forage upward and move into the TIC.

If termites are detected in the TMB and/or in the TIC, the TIC is replaced with an Advance Termite Bait Cartridge (TBC). The TBC comes individually wrapped in plastic to prevent contamination of the cartridge prior to use. **This plastic wrapper must be removed before the cartridge is used. Technicians should be careful not to mistake TICs for TBCs. TBCs are bar coded and have different labels.** Each bait cartridge contains 93 grams of Puri-Cell bait matrix plus 0.25% of the active ingredient diflubenzuron, which provides enough bait material to last more than 90 days, on average. If termite activity appears to be high, stations may be inspected more often and the bait replaced as needed.

### The Ultra Low Disturbance Interior

The large vertical slots in the station housing expose the wooden Termite Monitoring Base (TMB) to the soil, thus creating a significant wood-to-soil condition and primary target for termite activity. The horizontal grooves cut into the TMB were specifically designed to allow termites to quickly identify openings within the TMB and move into and aggregate in the center cavity.

Once termites move into the center cavity (Figure 13) they attract other termites to this new feeding site and begin to colonize or aggregate within. During routine inspection and baiting, the TMB is not removed; it remains in place and serves as an ultra low disturbance termite base.

**Figure 1** - Advance TBS installed at 10 ft. intervals.

**Figure 2** - Advance TBS installed in mulch.

**Figure 3** - Soil cavity created with gas-powered soil auger.

**Figure 4** - Advance TBS next to soil cavity ready to be installed.

**Figure 5** - Installing the Advance TBS into the ground.

**Figure 6** - Press the Advance TBS into the ground by stepping on the station cap.

**Figure 7** - Removal of the Advance TBS cover using a long handle Spider.

**Figure 8** - Removal of the Advance TBS cap using a short handle Spider.

**Figure 9** - Advance TBS cap removed from the station and held in The Spider.

**Figure 10** - Advance TIC removed for inspection using a cotter pin removal tool.

**Figure 11** - Termite feeding activity detected within the Advance TIC.

**Figure 12** - Termite tunneling activity and mudding around and inside the Advance TIC.

**Figure 13** - Termite feeding and colonization of the Advance TMB.

## TMB AND TIC REPLACEMENT SCHEDULE

Like all cellulose materials in the ground, they are prone to decay and mold. Best practices indicate that on average the TMB should be replaced once per year. This is heavily dependent upon the degree of termite activity, amount of rainfall and other environmental conditions in your area. If a TMB requires replacement more often, it may indicate poor station placement and requires station relocation to an area less likely to hold standing water.

In addition to those consumed during the pre-baiting process, a best practice is to replace TICs at least once a year. Once the Puri-Cell monitoring tablets get wet they expand, forming layers within the TIC. This is normal and expected. These same expanded moist tablets remain very palatable to termites.

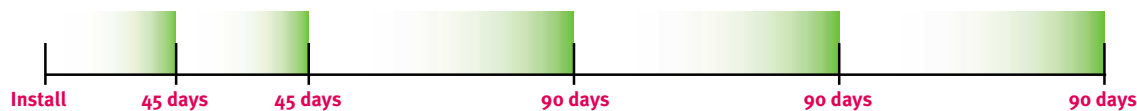
While in the ground, it is possible for the TMB and/or TIC to become covered with mold. In general, if the TMB shows signs of a white or gray colored mold and the wood is soft or spongy when squeezed, it is recommended that it be replaced. For the TIC, if a slime mold appears within the cartridge it too should be replaced. In general, soot molds (black) appear to have no significant affect on either the TMB or TIC and both materials remain palatable and preferred by termites.





## Inspection Intervals (days)

Home with termites at time of installation



Home without termites at installation or when termites are discovered following installation



## INSPECTION SCHEDULE

If termites are active and/or in the structure at the time the Advance Termite Bait System is installed, inspect stations at 45 and 90 days from install date and approximately every 90 days thereafter. Following the initial installation, when termites are detected in the stations the inspection interval will remain approximately every 90 days. If no termite activity is detected at the time of installation then the first inspection is approximately 90 days after the stations were installed and approximately every 90 days thereafter.

## SPECIAL CONDITIONS

### Monitoring and Baiting Through Concrete

In areas where access to the soil is restricted, it may be necessary to cut or core through concrete or asphalt before the Advance Termite Bait System can be installed. The process of coring through concrete is not an easy task and should be conducted by trained and knowledgeable persons. It is strongly recommended that all utility lines be identified and marked before cutting through any hardened material and that the position of each access point be clearly marked.

Once the hardened surface (concrete, asphalt) is cut the core is removed and the position of the soil beneath the hardened surface measured. If the soil has subsided and a space between the soil and hardened surface exists it is recommended that additional soil or sand be poured into the opening of the core and packed down. This is to provide a continuous zone of soil and to help hold the elements of the system in place.

Once the core cavity is prepared, the technician inserts an Advance TMB into the cavity and pushes it down to provide sufficient space to allow for either an Advance TIC or Advance TBC to be placed on top of the TMB. Once these two units are inserted into the core cavity the opening is capped, using a concrete or hardened surface cap, and secured. It is important to note that an Advance Termite Bait Station is **not needed in this case**. The coring within the concrete or asphalt is considered to be the station housing that contains the components of the Advance Termite Baiting System.

**For additional assistance, call Technical Service at 800-777-8570.**



800.777.8570 www.wmmg.com